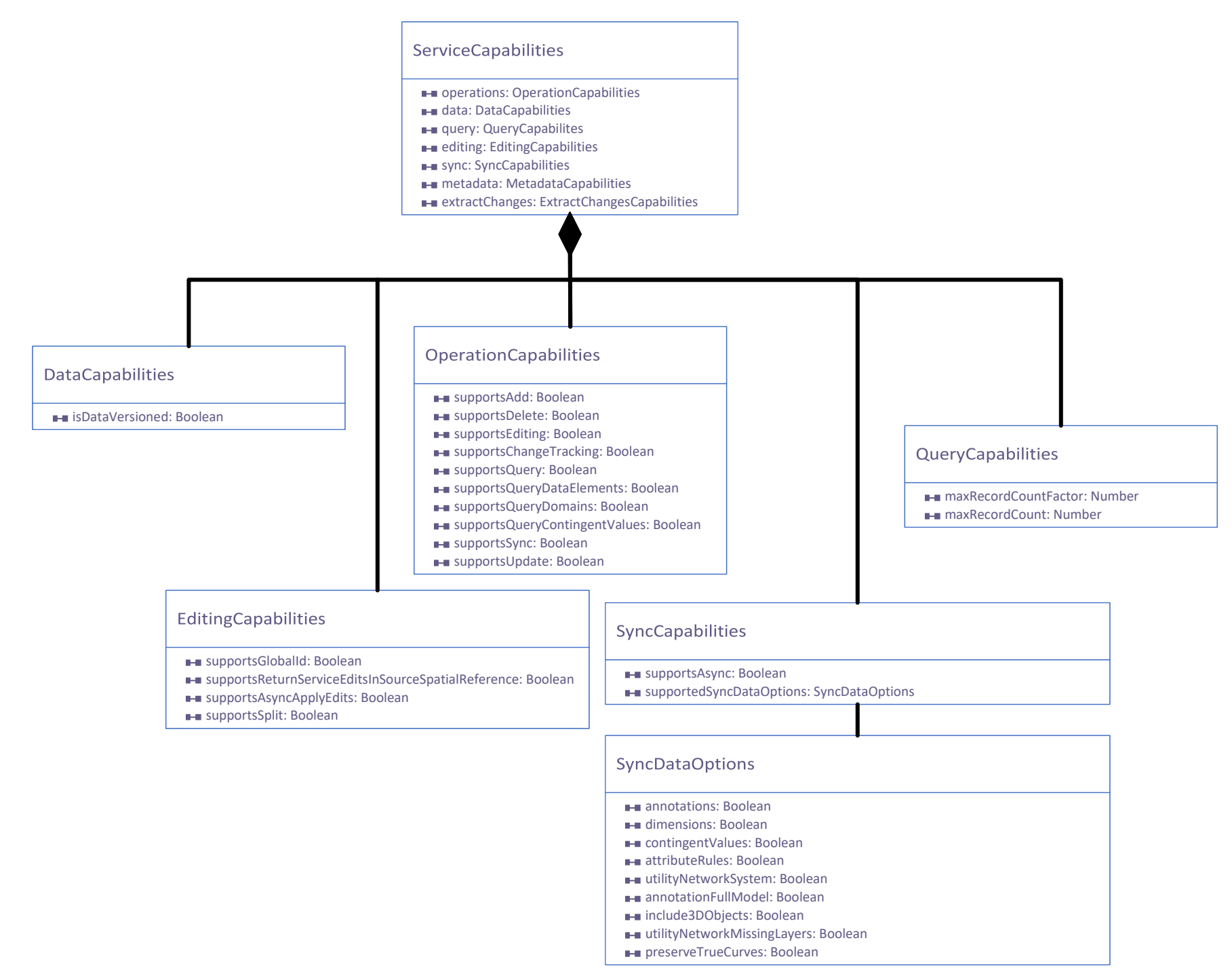
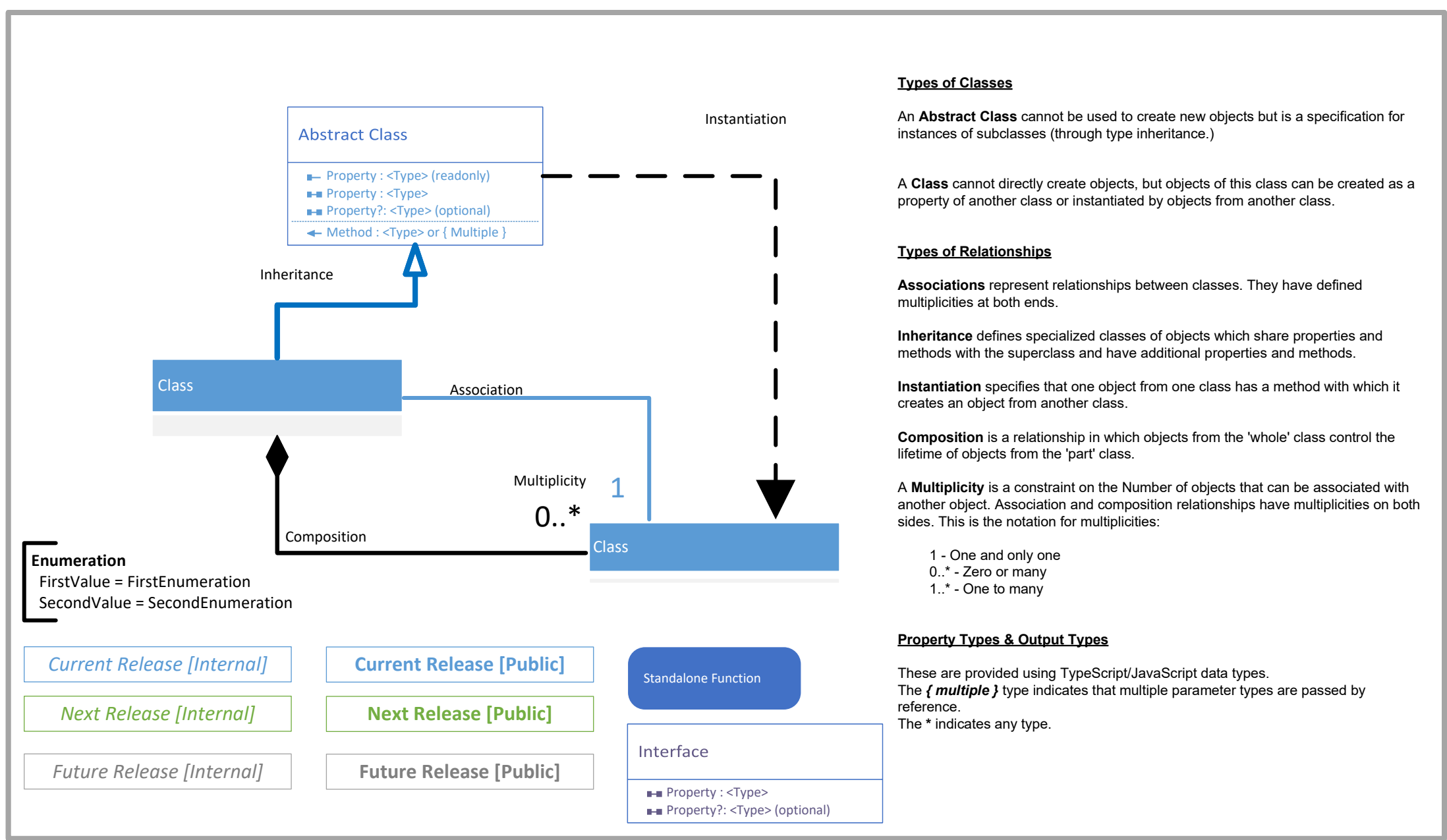


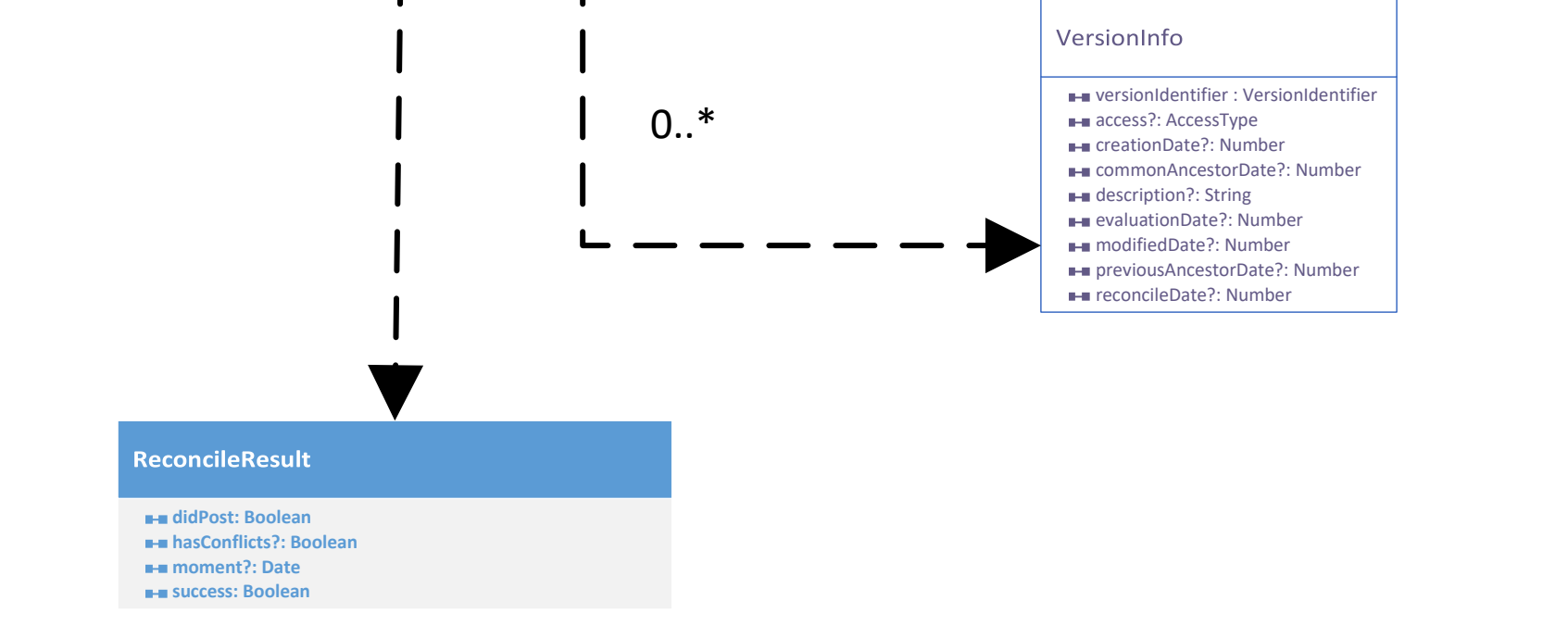
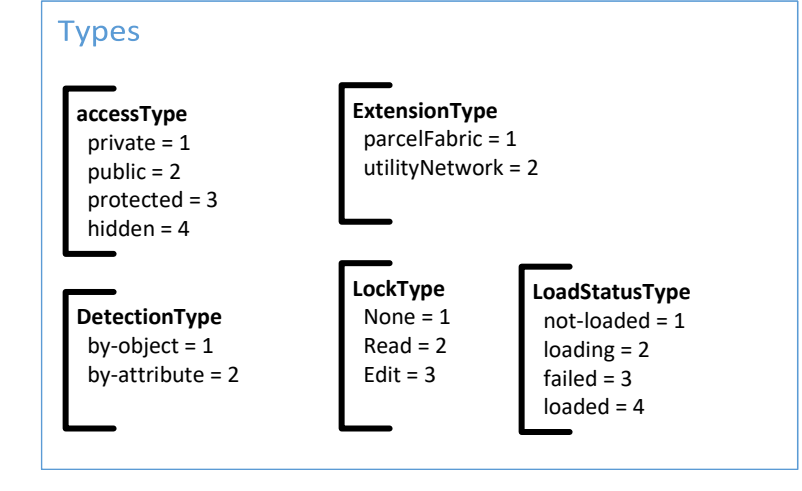
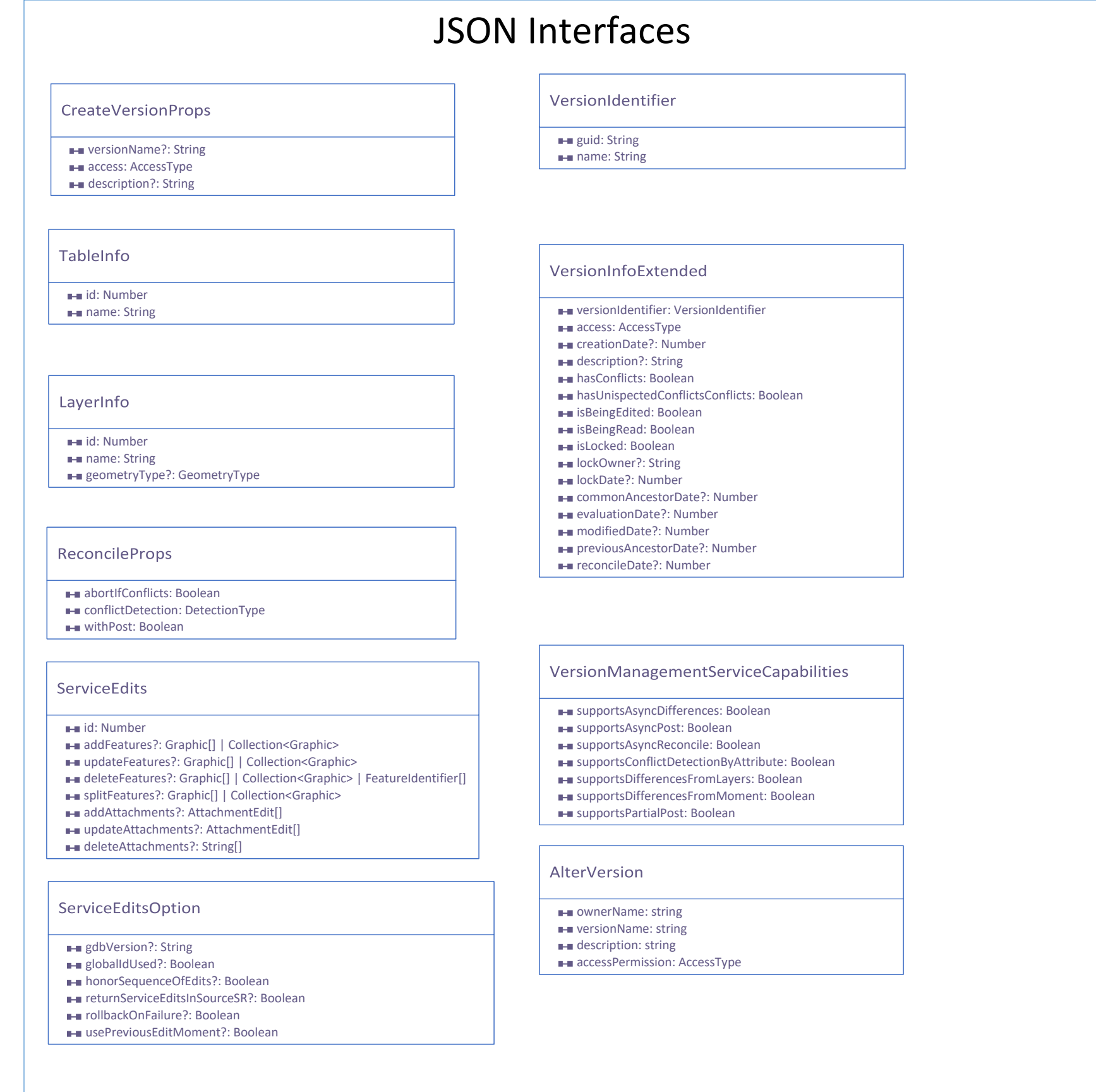
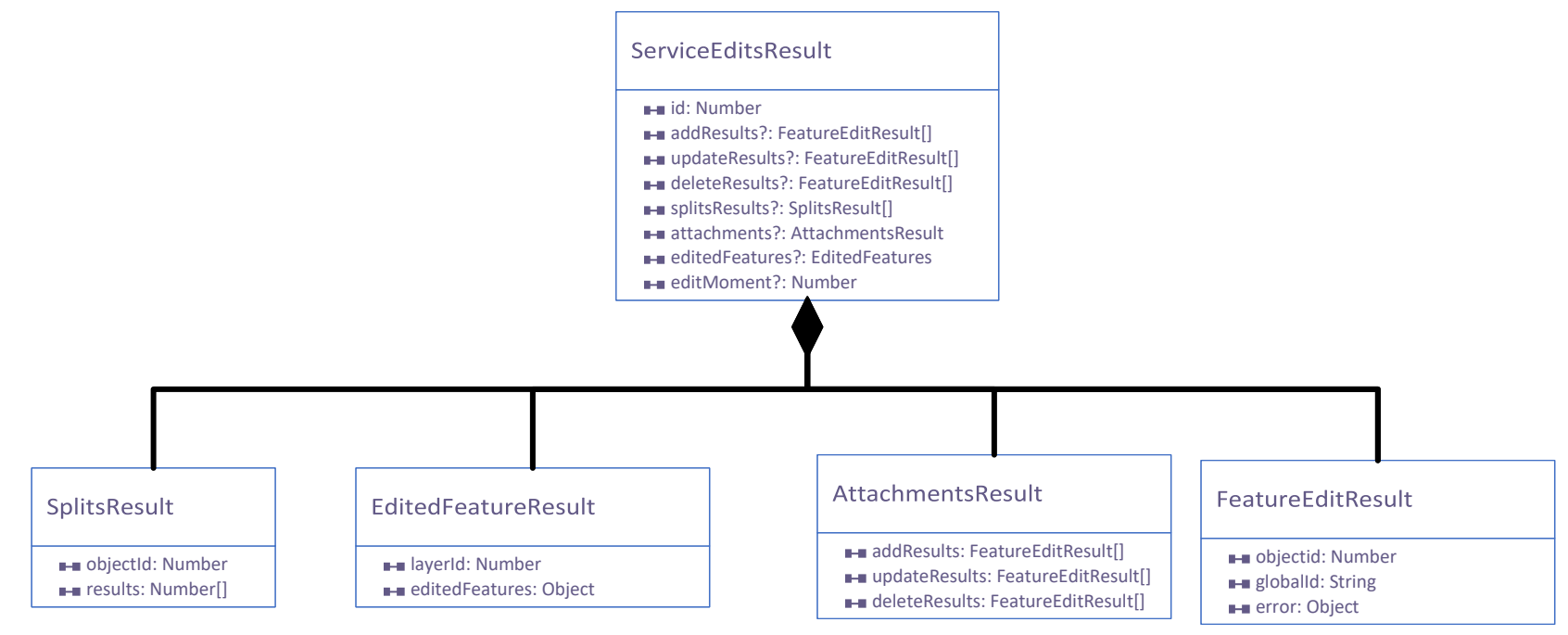
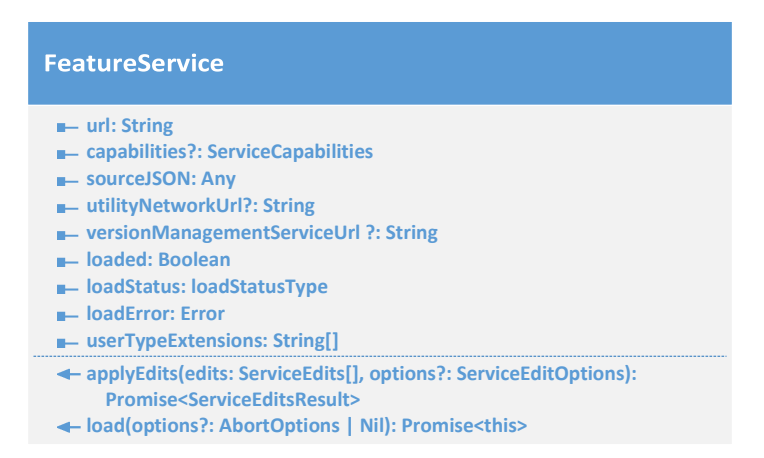
ArcGIS API for JavaScript 4.29 Geodatabase

© 2024 ESRI. All rights reserved. ESRI and ArcGIS are trademarks, registered trademarks, or service marks of ESRI in the United States, the European Community, or certain other jurisdictions.



```

createFeatureServiceByLayers: Collection<Layer> | LayerId | LayerId[] | LayerId[] | FeatureServiceResourceBundle
  
```



ArcGIS Maps SDK for JavaScript 4.29

Utility Network Widgets

©2024 ESRI. All rights reserved. ESRI and ArcGIS are trademarks, registered trademarks, or service marks of ESRI in the United States, the European Community, or certain other jurisdictions.

```

UtilityNetworkAssociations
  ● enableRefreshAssociations: Boolean
  ● includeConnectivityAssociations: Boolean
  ● includeStructuralAttachmentsAssociations: Boolean
  ● jobId: String
  ● maxAllowableAssociations: Number
  ● maxAllowableAssociationsOrderMin: Number
  ● maxAllowableAssociationsOrderMax: Number
  ● maxAllowableAssociationsOrderStep: Number
  ● messages?: UtilityNetworkAssociationMessages
  ● showArrowConnectivity: Boolean
  ● showArrowStructuralAttachment: Boolean
  ● showAssociations: Boolean
  ● structuralAttachmentsAssociationsLineStyleSymbol: SimpleLineStyleSymbol
  ● utilityNetwork: UtilityNetwork
  ● view?: MapView
  ● viewModel: UtilityNetworkAssociationViewModel
  ● visibleElements: VisibleElements
  ● render(): Viewable
  
```

```

UtilityNetworkValidateTopology
  ● extentForValidate: ["current" | "extent"]
  ● label?: String
  ● messages?: UtilityNetworkValidateTopologyMessages
  ● utilityNetwork: UtilityNetwork
  ● view: MapView
  ● viewModel: UtilityNetworkValidateTopologyViewModel
  ● render(): Viewable
  
```

```

UtilityNetworkTrace
  ● defaultGraphicColor: GraphicColor
  ● disabled: Boolean
  ● flag: FlagProperty[]
  ● jobId: String
  ● nonData: String
  ● inputSettings: InputSettings[]
  ● label: String
  ● intersectTraces: String[]
  ● intersectOnComplete: Boolean
  ● showGraphicOnComplete: Boolean
  ● showSelectionAttributes: Boolean
  ● utilityNetwork: UtilityNetwork
  ● view: MapView
  ● viewModel: UtilityNetworkTraceViewModel
  ● checkCanTrace(): Promise<void>
  ● confirmResult(): void
  
```

```

VersionManagementViewModel
  ● featureService?: String (readonly)
  ● featureService: Map<String, FeatureServiceResourceBundle>
  ● layers: Collection<Layer>[]
  ● isLoading?: Boolean (readonly)
  ● message: VersionManagementMessages
  ● onReady: Map<String, String>
  ● state: State (readonly)
  ● search?: Map<String, Any[]>
  ● versionInfo: Map<String, VersionInfo>
  ● versionManagementService: Map<String, VersionManagementService>
  ● afterVersionParameters: AlterVersionParameters; Promise<void>
  ● changeVersionParameters: ChangeVersionParameters; Promise<void>
  ● createVersionParameters: CreateVersionParameters; Promise<void>
  ● deleteVersionParameters: DeleteVersionParameters; Promise<void>
  ● getVersionInfoByFeatureServiceId: String, versionName: String, versionId?: String; Promise<void>
  ● getVersionInfoByFeatureServiceId: String, refreshVersionInfo?: boolean; Promise<VersionInfo[]> | undefined;
  
```

```

UtilityNetworkAssociationsViewModel
  ● autoRefreshAssociations: Boolean
  ● connectivityAssociationsLineStyleSymbol: SimpleLineStyleSymbol
  ● includeConnectivityAssociations: Boolean
  ● includeStructuralAttachmentsAssociations: Boolean
  ● loadErrors: Collection<string>
  ● messages: UtilityNetworkAssociationMessages
  ● moment?: Date
  ● showArrowConnectivity: Boolean
  ● showArrowStructuralAttachment: Boolean
  ● state: State
  ● structuralAttachmentsAssociationsLineStyleSymbol: SimpleLineStyleSymbol
  ● utilityNetwork: UtilityNetwork
  ● view?: MapView
  ● removeAssociations(): Promise<void>
  ● showAssociations(): Promise<void>
  
```

```

UtilityNetworkValidateTopologyViewModel
  ● executionError: String
  ● extentForValidate: String
  ● loadErrors: Collection<string>
  ● messages: UtilityNetworkValidateTopologyMessages
  ● state: State
  ● utilityNetwork: UtilityNetwork
  ● view: MapView
  ● validateTopology(): Promise<void>
  
```

```

UtilityNetworkTraceViewModel
  ● defaultGraphicColor: GraphicColor
  ● flag: FlagProperty[]
  ● jobId: String
  ● jobIdOverride: JobIdOverride
  ● intersectTraces: String[]
  ● intersectOnComplete: Boolean
  ● showGraphicOnComplete: Boolean
  ● showSelectionAttributes: Boolean
  ● state: String
  ● traceResult: TraceResultExtended[]
  ● utilityNetwork: UtilityNetwork
  ● view: MapView
  ● addFlagByPID(): Promise<Boolean>
  ● addResultGraphicByPID(): Promise<void>
  ● addTerminal(): void
  ● addTerminal(): Promise<Boolean>
  ● changeResultGraphicColor(): void
  ● checkCanTrace(): Boolean
  ● checkSelectionState(): Boolean
  ● clearResult(): void
  ● recursiveTrace(): Promise<TraceResultExtended[]>
  ● getAdvancedSettingsByTypeExtension(): Array<EdgeSourceJSON | JunctionSourceJSON>
  ● loadUtilityNetwork(): Promise<UtilityNetwork>
  ● manageFeatureSet(): void
  ● mergeSelection(): void
  ● removeFlag(): void
  ● queryFlagByPID(): Promise<FeatureSetInfo[]>
  ● removeResultGraphicFromView(): void
  ● removeTerminal(): void
  ● removeTerminal(): void
  ● reset(): void
  ● selectFeaturesByPID(): void
  ● selectTerminal(): void
  ● selectTraces(): void
  ● selectTraces(): void
  ● validateUserTypeExtension(UtilityNetwork): Promise<Boolean>
  ● zoomToExtent(): void
  
```

JSON Interfaces

```

InputSettings
  ● type: String
  ● label: String
  ● description: String
  ● symbol: SimpleMarkerSymbol | PictureMarkerSymbol
  
```

```

JunctionSourceJSON
  ● layerId: Number
  ● assetGroups: AssetGroupJSON[]
  ● sourceId: Number
  
```

```

Traceltem
  ● selected: Boolean
  
```

```

TraceResultExtended
  ● traceltem: Traceltem
  ● traceResult: TraceResult
  ● selectedOnTable: Boolean
  ● graphicEnabled: Boolean
  ● graphicColor: GraphicColor
  ● status: String
  
```

```

UtilityNetworkAssociationsMessages
  ● inputStrings: {enableAssociations: String, enableConnectivity: String, enableStructuralAttachment: String, maxAllowableAssociations: String, refreshAssociations: String}
  ● infoStrings: {maxAllowableAssociationsExceeded: String, noAssociationsFound: String, noUtilityNetwork: String}
  ● widgetLabel: String
  
```

```

UtilityNetworkValidateTopologyMessages
  ● widgetLabel: string
  
```

```

UtilityNetworkAssociationsMessages
  ● label: String
  ● info: {noAdvancedSettingsByTypeExtension: String, noFeatureServiceFound: String, noLayersProperty: String, noValidInterVersion: String, noVersionManagementServiceFound: String}
  
```

```

VisibleElements
  ● maxAllowableAssociationsOrder?: Boolean
  
```

```

AlterVersionParameters
  ● featureService?: String
  ● versionName?: String
  ● versionId?: String
  ● versionName?: String
  ● access?: AccessType
  ● description?: String
  
```

```

AssetGroupJSON
  ● assetGroupCode: Number
  ● assetGroupName?: String
  ● assetTypes: AssetTypesJSON[]
  
```

```

AssetTypeJSON
  ● assetTypeCode: Number
  ● assetTypeName?: String
  ● terminalConfigurationId: Number
  
```

```

CreateVersionParameters
  ● featureService?: String
  ● versionName: String
  ● versionId: Number
  ● access: AccessType
  ● description: String
  ● versionOwner?: String
  
```

```

DisplayField
  ● field: String
  ● value: String
  
```

```

EdgeSourceJSON
  ● layerId: Number
  ● assetGroups: AssetGroupJSON[]
  ● sourceId: Number
  
```

```

FeatureSetInfo
  ● layer: FeatureLayer
  ● featureSet: FeatureSet
  
```

```

FlagProperty
  ● allTerminals: TerminalConfiguration
  ● details: any
  ● displayField: DisplayField
  ● id: Number
  ● mapGraphic: Graphic
  ● mapLabel: Point
  ● selectedTerminal: Number[]
  ● type: String
  
```

```

GraphicColor
  ● color: Number[]
  ● haloOpacity: Number
  ● hex: String
  
```

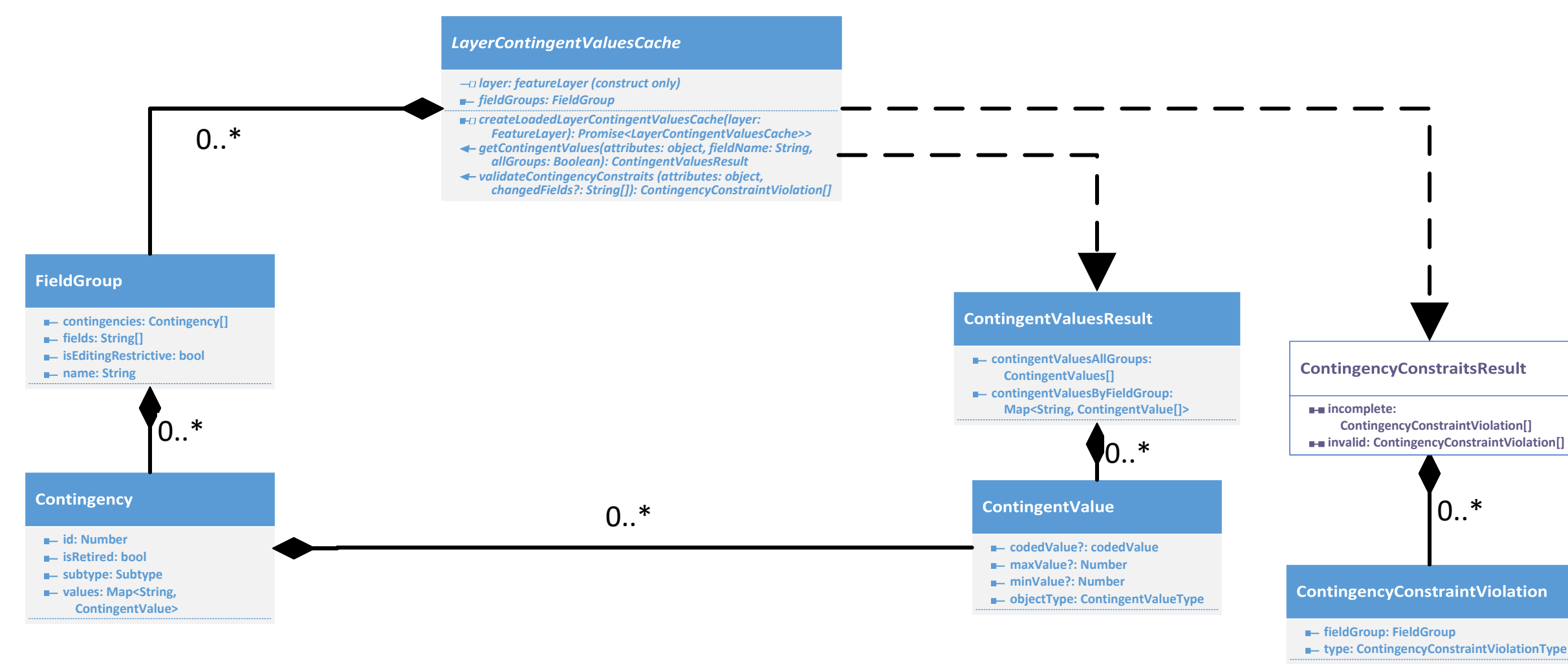
```

Types
  State
  loading
  ready
  selecting
  success
  failed
  disabled
  
```

ArcGIS Maps SDK for JavaScript 4.29

Contingent Values

© 2024 ESRI. All rights reserved. ESRI and ArcGIS are trademarks, registered trademarks, or service marks of ESRI in the United States, the European Community, or certain other jurisdictions.



JSON Interfaces

